

Positioning of the Target Hall Cameras (Version 1)

This is to give a brief description and instructions for the ISAC Operators to position the cameras in the ISAC Target Hall. For their viewing pleasure and excitement.

There are three cameras that are viewable all the time on the web from the server they are the Hot Cell camera, the West Station camera and the General View camera. The fourth view will appear from time to time if another camera is hooked up to the line.

The cameras where they are and where they look.

The Hot Cell camera is located on the north wall of the target hall at the east end of the hall. It will have good views of the south and north hot areas in the hall, as well as the hatch area, and a long the mezzanine to the target station. Also it has an adequate view of the top of the Module Access Area.

The General View camera is located on the railing on the mezzanine and the railing by hot cells, dependent on the job at hand. This camera has a good views of the hot cell areas and the storage area. It's view of the MAA is poor.

The West Station camera is located on the north wall of the target hall at the west end of the hall. It will have good views of the MAA and is the only camera that can look into the East and West Target Station. It also has a good view of the rest of the target hall except for the storage area where it view is very poor.

Location of where to operate the cameras.

Control of the cameras is located in the Remote Handling Control Room. This room is located on the level B1 of the ISAC 1 office building next door to the Ion Source Control Room, which used to be the old First Aid room. The door to the RHCR is locked at all times and is to remain locked at all times, so you are finished playing with the cameras **remember to lock the door** behind you as you leave. To unlock the door you'll need a 2T-90, 2T-2 or the 2T-1 issued keys.

The control room:



Illustration 1: The monitors in the RHCR

Upon entering the room you will see the console before you turn on the two centre switches on the power bars, what the arrows are pointing to, and that will power up the monitors. The views from left to right are:

- the West Target camera
- the Hot Cell camera
- the General View camera

To your right on the console is a computer. This computer controls the all the pan tilts in the Target Hall. Wiggle the mouse and you'll see this screen.

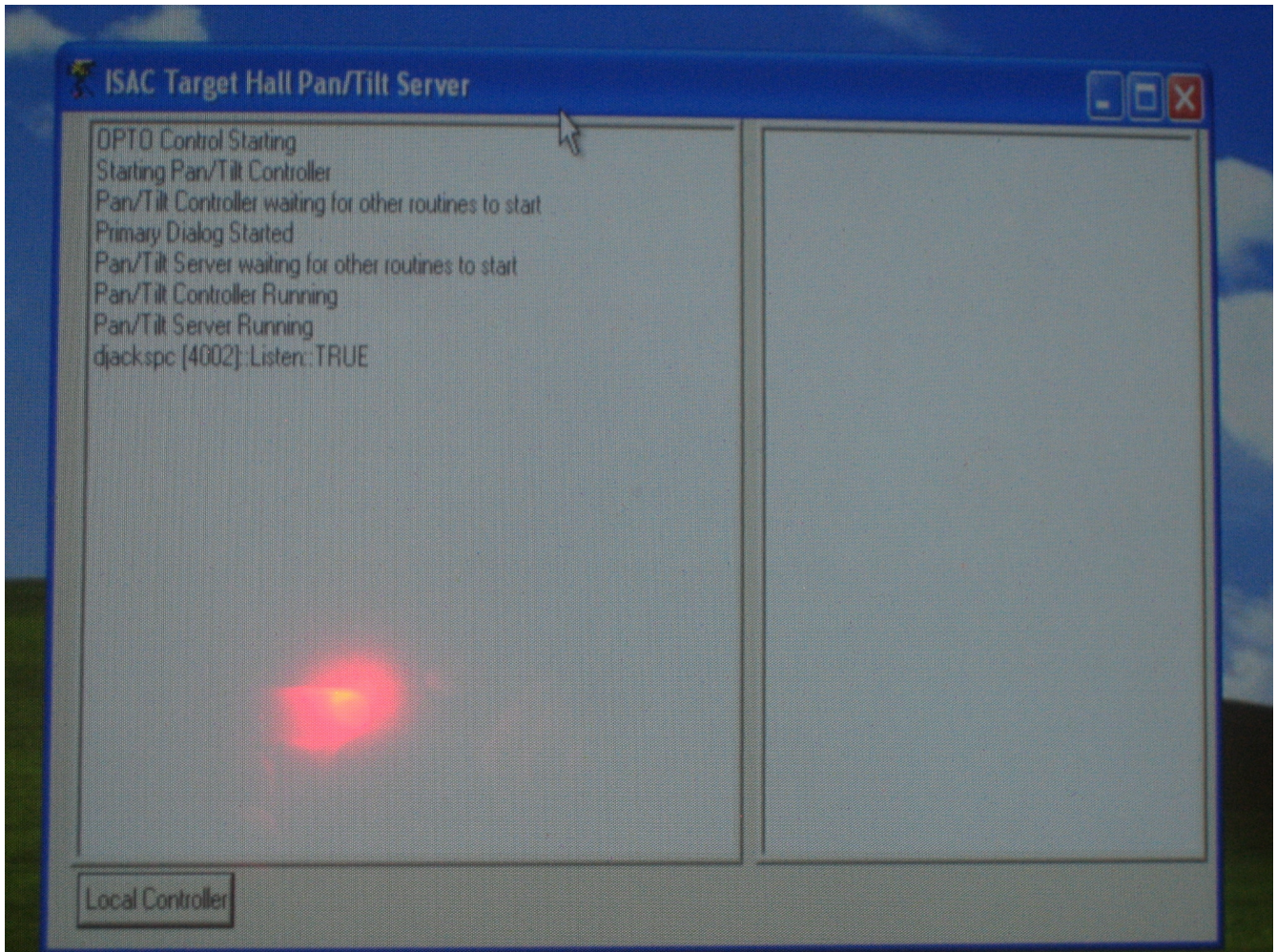


Illustration 2: Screen of computer PT I/O control

Kill it.

Once the window is dead. You'll see this:

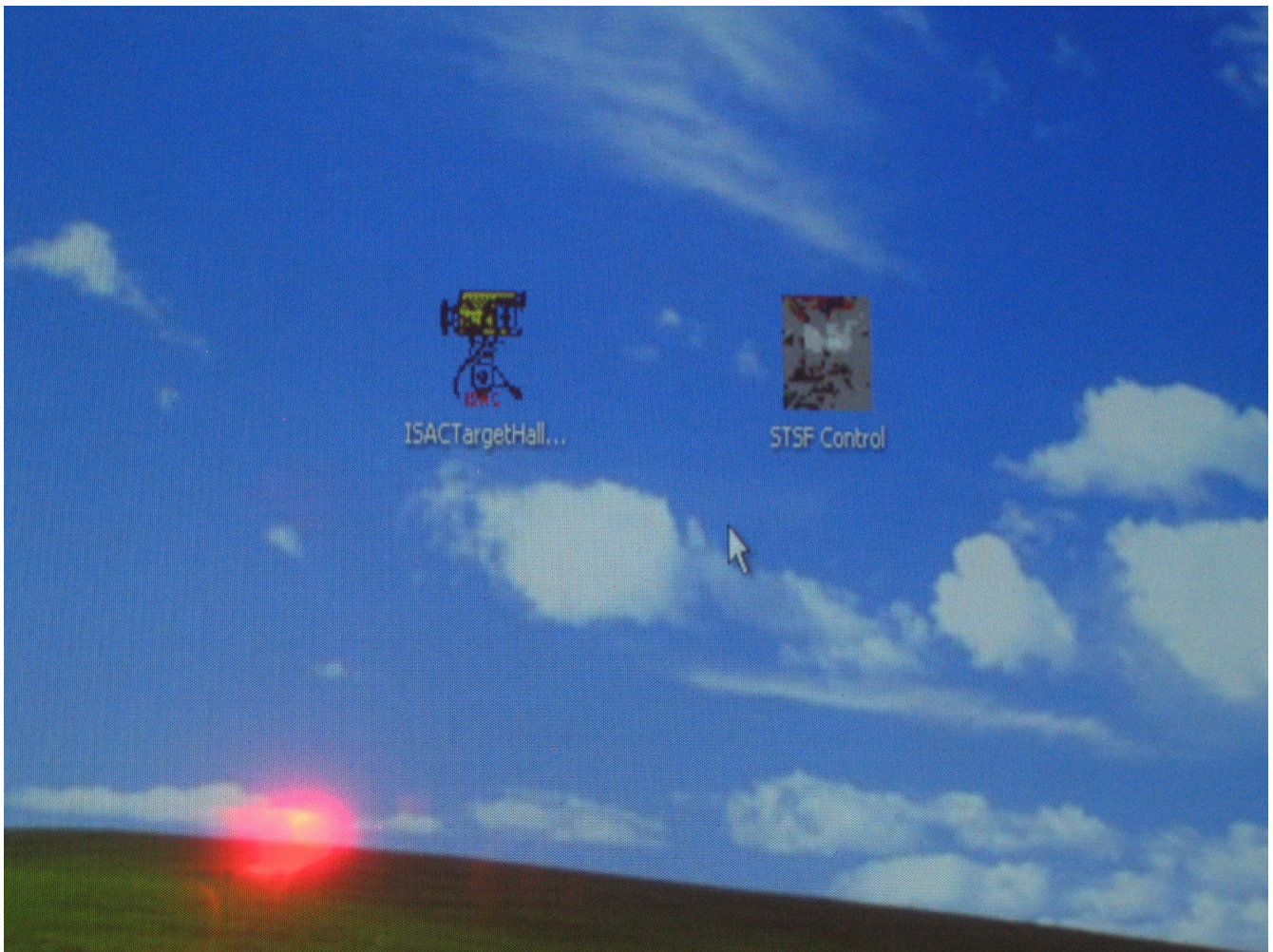


Illustration 3: Hmm.. the left icon or the right only you have the power to decide.

Double click on the left icon to bring up the pan tilt control screen. Which looks like this:

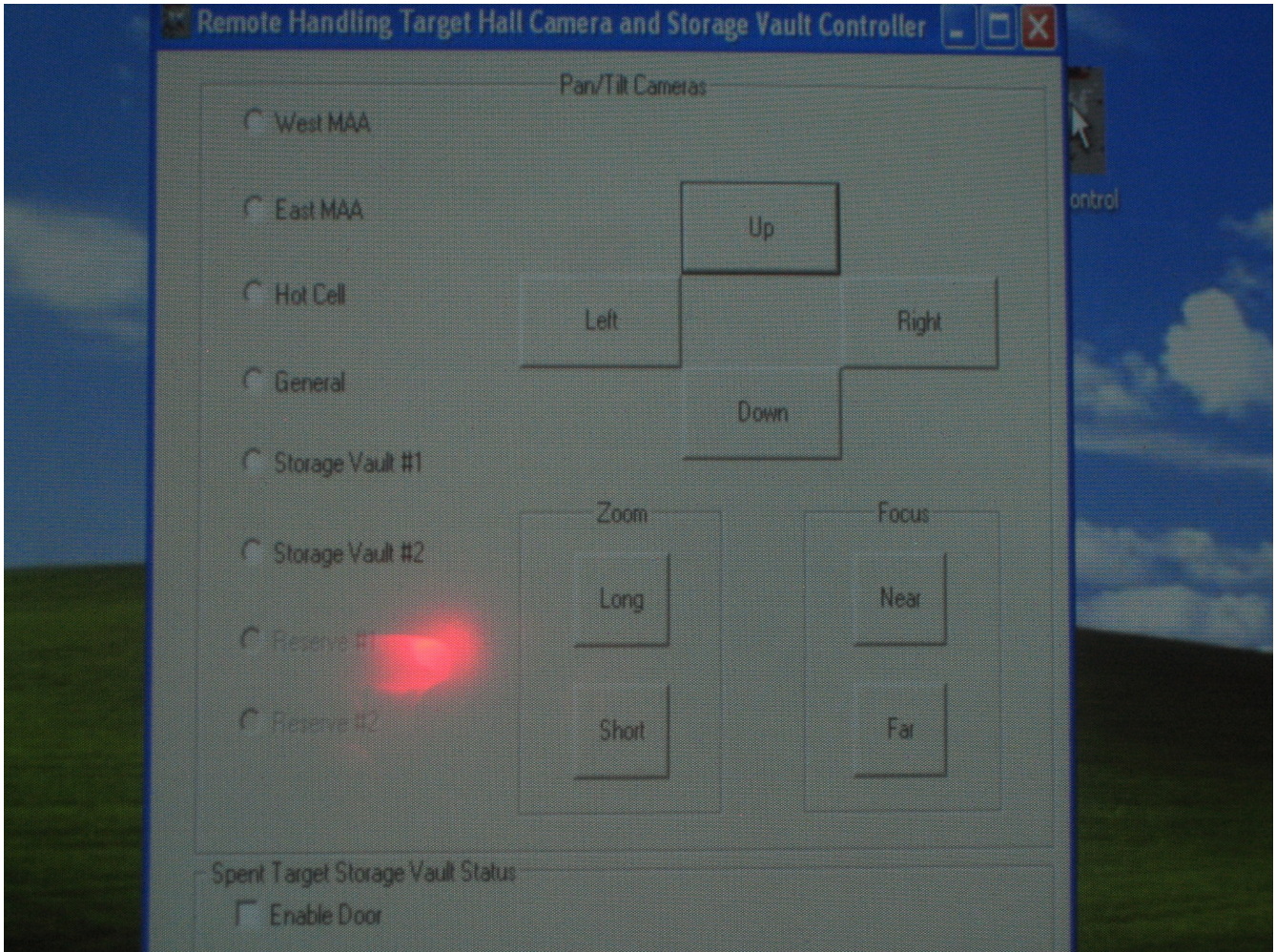


Illustration 4: West MAA I choose you!

Pick the camera you wish to control. So in this case it will be West MAA, Hot Cell or General. Adjust the cameras until you get the view you want.

When you are done do the follow when you leave.

Shut down that window.

Double click on the right hand icon, then leave the computer alone.

Turn off the monitors via the power bar buttons.

Turn off the lights.

Remember to lock the door on your way out.